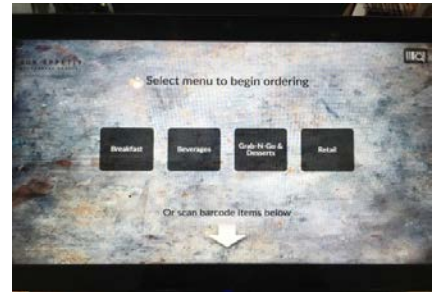


# PACIFIC CAFÉ KIOSK 101

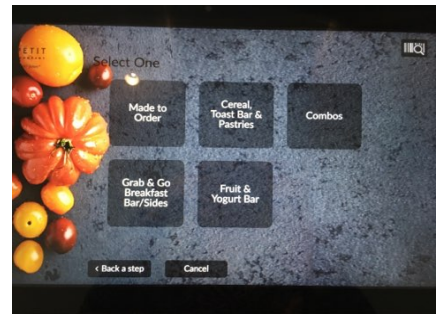
## GOOD MORNING, LET'S TRY A MADE-TO-ORDER OMELET!

This screen right here is our breakfast screen, and I bet it is more intuitive than you were expecting. Let's try this, I want an omelet.

I choose BREAKFAST.



Then: MADE TO ORDER



From here you can choose OMELET. (It doesn't matter if it is from the grill or from the Action line.)



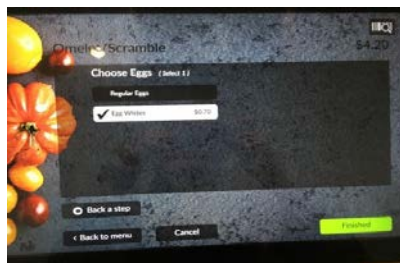
The next screen is where you can customize.



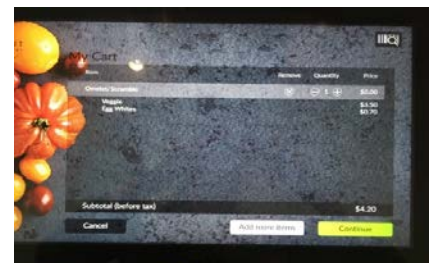
Choose your omelet type – veggie or meat



You selected egg whites? We've got a button for that! When finished, choose COMPLETE.



Having more than just the Omelet? You may choose "ADD MORE ITEMS" or CONTINUE to complete your transaction



# PACIFIC CAFÉ KIOSK 101

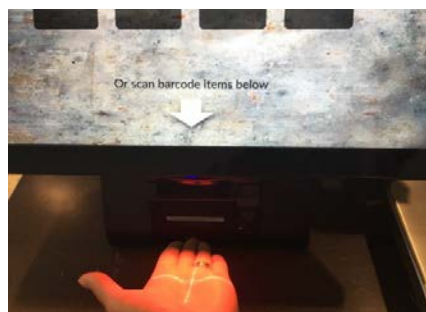


## ADD ANOTHER ITEM...

By selecting ADD MORE ITEMS, you will return to the breakfast screen. Select FRUIT AND YOGURT, this is where you go to purchase an item from the a.m. salad bar. You can also choose whole fruit here.

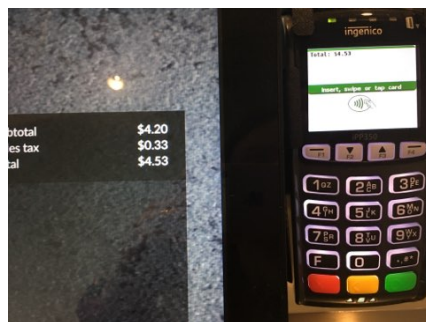


Looking for a beverage? Can't find your favorite bottled beverage? Bottled items can be scanned. Look below for the X and simply line up the barcode



Once you are done, you may look at your cart or hit CONTINUE to pay. At this time you can gather your card or set up your phone and the terminal is ready to accept payment.

Remember, insert chip up.



# PACIFIC CAFÉ KIOSK 101

## GOOD AFTERNOON, LET'S DO LUNCH

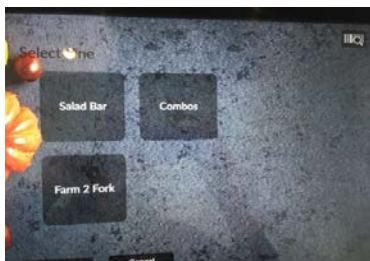
Now, if you think, “wow, breakfast is a cinch!” than you’ll have no issues with lunch.

If you know the name of the station your food came from, you will not have a problem checking out! Let’s say your lunch selection comes from the CRAFTED station – select “ACTION AND CRAFTED” →

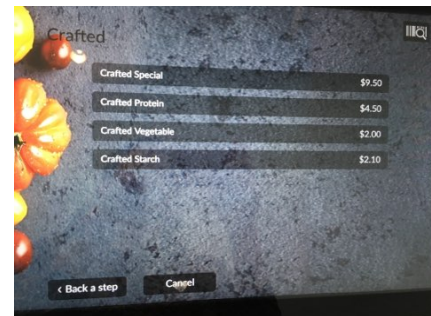
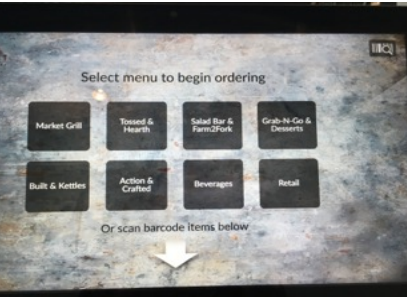
And then select CRAFTED one more time on the next screen. →

Touch Crafted Special for the full meal. Wait, you only have the salmon? No worries! We have a button for that. Hit CRAFTED PROTEIN! →

After selecting if will take you back to the cart, but I will bet you paired that with a salad from FARM TO FORK, after all, it is your lunch, order like a Rock Star! So hit “ADD MORE ITEMS”. From the main menu Choose “SALAD BAR & FARM2FORK”.



Here you can choose the type of vessel you used as well as add the local chicken or tofu from the Farm to Fork station. Once you are done with your items you can look at your cart or hit the CONTINUE to pay. At this time, you can gather your card or set up your phone, and the terminal will likely be ready to accept your payment! →



## ENJOY YOUR MEAL!